

Cast Basalt Floor Tiles

Interior/Exterior

- Commercial
- Institutional
- Industrial
- Residential



Cast Basalt Floor Tiles

PRODUCT PRESENTATION

Cast Basalt floor tiles are a material with decorative appeal and exceptional physical performance characteristics. It is one of the hardest ceramic materials known. They are selected for two key reasons: unique aesthetics and high performance.

Manufacturing Techniques

Basalt is one of the hardest natural materials known to man and is renowned worldwide for its longevity. Basalt, as a neovolcanic rock is smelted in the gas furnace at around 1280° C and cast into metallic or sand molds at a temperature of around 1200° C. The cast basalt tiles are annealed in a furnace for approximately 16 to 21 hours to achieve the uniform crystalline structure that gives our finished tiles superior long-term performance and their unique appearance.

Sizes

We offer a large range of shapes and sizes - this catalog contains many of our most popular types. Given minimum production quantities and enough lead-time, we will make special molds to your dimensions and patterns. Call us for assistance with custom designs.

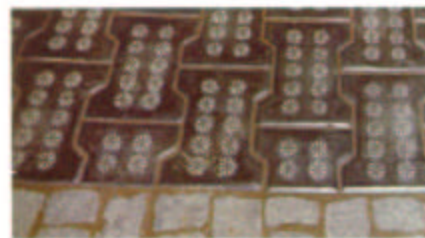
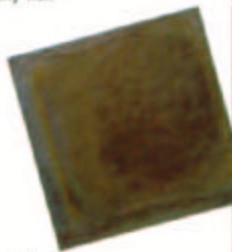
Cast Basalt tiles are made in hard-metric sizes.

Appearance

Cast Basalt Tiles are naturally black with some tinges of bronze. The surface is not perfectly flat.

Cast Basalt Tile Characteristics

- High compression strength
- High abrasion resistance
- Chemical resistance
- Non-absorptive
- Frost resistant
- High durability
- Ecological and hygienic compatibility
- Unique appearance not found in any other tile material



Decorative Inserts

These colored ceramic inserts are used with the Flexible Thales tiles - see page 4. They fit into the specially shaped spaces between adjacent tiles. Available in red, green, blue and yellow.



USES and APPLICATIONS

Our tiles have been used around the world in a wide variety of applications and building types since the mid 1970's. As an industrial flooring material, in their anti-slip form, Cast Basalt tiles have been proven successful for over 50 years. Cast basalt tiles are suited to interior and exterior uses. **All tiles are F.D.A. approved.**

Commercial applications include restaurant kitchens and dining areas, bars/pubs, hotel lobbies, auto dealer showrooms, retail stores, decorative paving, airport ticketing and concourse areas. Used as highly durable facings for reception counters and window sills.

Institutional uses include hospital lobbies and waiting areas, monumental entrances, museums, public transportation stations.

Industrial uses include bakeries, wineries and breweries, food processing, manufacturing. Heavier weight tiles, bricks and special shapes are available. Call us for information on these specialized uses.

Residential uses include kitchens, entries, patios, halls, recreation rooms.

PRODUCT IN PLACE

Cast Basalt tiles are typically installed over solid, sound concrete. Call for our design recommendations on substrates where deflection is a consideration.

Cast Basalt floor tiles are compatible with standard portland cement grouts. High-performance grouts can also be used when needed to resist environmental conditions.

ASSEMBLY and INSTALLATION

Cast Basalt tiles are laid on a thick bed of portland cement based mortar, of sufficient thickness to compensate for the slight variation (+/- 2 mm) in tile thickness and any variation in flatness / levelness of the substrate. Set tile for full contact with mortar - make sure there are no cavities under the tiles. All joints must be even in width, in line and level.

OPERATION and MAINTENANCE

The cast Basalt tile surface is dust-free. It is easy to keep clean with normal floor maintenance techniques and equipment. The pattern on the anti-slip tiles is also designed for easy cleaning. Cast Basalt tile is resistant to all normal cleaning and sanitizing agents. The use of sealers or dressings is optional and not necessary.

Interior Tiles

	Dimensions	Weight	#pcs/m ²	Sketches
Florintina	247x172x25	2.2	30	
Charlotte	250x25	3.0	10	
Mava	132x200x22	2.3	10	
Plain Tiles	200x200x22 JR 250x250x22 JR	2.6 18.75	16 10	
Stair-Horse Tiles	200x300x30	4.6	16	
Angular tiles	250x90x22x250 JR	5.1	4	
Hex	200x25	2.4	29	
Hex 1/2A	see sketch 25mm thickness 60mm thickness	1.3	58	
Hex 1/2B	see sketch 25mm thickness 60mm thickness	1.3	58	
Nika	200x200 JR 250x250 JR	3.1 4.8	25 16	

Exterior Tiles

	Dimensions	Weight	#pcs/m ²	Sketches
Jitka	250x250x30 R	2.6	25	
Pavia 1	250x250x30 R	5.0	16	
Pavia 2	250x250x30 R	4.8	16	
Pavia 3	250x250x30 R	5.0	16	
Pavia 4	250x250x30 R	4.8	16	
Pavia 5	250x250x30 R	4.8	16	
Metropan 1	250x250x30 R	5.3	16	
Metropan 2	250x250x30 R	5.2	16	
Erika	314x250x40	8.4	13	
Interlock Tiles	200.3x162.3x40 ZANKOVA	3.4	35	

Anti-slip Patterns

Used for interior and exterior applications.
200x200x30 Standard Size.
Specials up to 250x250x30 can be made to order.



Industrial Tiles and Special Shapes



Flexible Thales Tiles

	Dimensions	Weight	#pcs/m ²	Sketches		Dimensions	Weight	#pcs/m ²	Sketches	
Thales Alpha right	see sketch 25mm thick 40mm thick	2.5 3.9	according to design layouts			Thales Beta left	see sketch 22mm thick	3.8	according to design layouts	
Thales Alpha left	see sketch 25mm thick 40mm thick	2.5 3.9	according to design layouts			Thales Gamma	see sketch 22mm thick	3.6	according to design layouts	
Thales Beta right	see sketch 22mm thick	2.2	according to design layouts			Thales Delta	see sketch 25mm thick 40mm thick	3.5 5.5	according to design layouts	

Legend and Notes

Dimensions are in millimeters. Weight is Kilograms per individual tile.
Cast Basalt tiles are made to hard-metric dimensions.
Recommended joint widths: 6.5 mm to 12.7 mm (1/4" to 1/2")

- JRI** Reverse side fine ribbing (interior tiles)
JR Reverse side fine ribbing
R Reverse side standard ribbing

TECHNICAL SUPPORT

Properties - Mean Values

Mohs Hardness
Volume Mass
Compressive Strength
Abradability
Wear Resistance
Absorption Rate
Thermal Conductivity
Thermal Shock Resistance
Insulation Resistance
Sulphuric Acid Solubility
Chemical Resistance - general

Results - Metric Units

8
2900 - 3000 kg.m³
300 - 450 MPa
max. 5 cm³/50 cm²
110 mm³
0% mass
1.9 - 2.2 W.m⁻¹.K⁻¹
100°C
10¹⁰
9% mass
All organic solvents and acids,
alkaline solutions including inorganic
solutions, *except hydrofluoric acid.*

DIN 28062

—
2800 - 2900 kg.m³
450 - 550 MPa
max. 4-6 cm³/50 cm²
—
0% mass
1.0 - 1.2 W.m⁻¹.K⁻¹
—
—
—

Slip Resistance¹
Smooth and JITKA surface
RB and RC surface

R-10 DIN 51130
R-11 DIN 51130

Notes: 1 Higher values mean greater slip-resistance. These results compare very favorably to conventional quarry tiles, brick pavers & smooth concrete.

AVAILABILITY and COST

Basalt Tiles are packed on wood pallets, 800 x 1000 mm, and Europallets, 800 x 1200 mm. Also packed according to customers specifications.

Please call us for cost estimating data based on your project's requirements.

CODES and CERTIFICATIONS

Notice of Limited Liability

We warrant these products to be of good quality and will replace or, at our option, refund the purchase price of any products proved defective. Satisfactory results depend not only upon quality products but also upon

many factors beyond our control. Except for replacement or refund, Decorative Cast Basalt Sales, Ltd. MAKES NO WARRANTY OR GUARANTEE EXPRESSED OR IMPLIED, INCLUDING WARRANTIES OF FITNESS FOR A PARTICULAR PURPOSE OR MERCHANTABILITY, RESPECTING ITS PRODUCTS, and Decorative Cast Basalt Sales, Ltd. shall have no other liability with respect thereto. Any claim regarding product defect must be received in writing within one (1) year from date of shipment. No claim will be considered without written notice or after the specified time interval. User shall determine the suitability of the products for the intended use and assumes all risks and liabilities in connection therewith.

F.D.A. Approval

All Cast Basalt Tiles are F.D.A. approved for use in food processing and handling facilities.

Represented by:



A Subsidiary of
The Greenbank Group, Inc.

185 Plumpton Avenue
Washington, PA 15301
Tel: 724-229-1180
Tel: 800-468-1180
Fax: 724-229-1185
E-mail: cbpbasalt@aol.com
Internet site: www.cbpengeering.com